

Industrial Gateway Server

Enabling reliable connections to your devices for control, data acquisition, and visualization



IGS Basic

IGS Basic includes access to all available IGS Basic protocols and use of up to 80 simultaneous protocols per server.

- Advanced Simulator
- Allen-Bradley 1609 UPS Driver
 - Allen-Bradley Bulletin 900
 - Allen-Bradley CompactLogix
 - Allen-Bradley ControlLogix Unsolicited
 - Allen-Bradley DH+/DH485
 - Allen-Bradley DF1
 - Allen-Bradley Ethernet
 - Allen-Bradley Micro800 Ethernet
 - Allen-Bradley Micro800 Serial
 - Allen-Bradley Unsolicited Ethernet
- Analog Devices OPC Server
- Aromat Ethernet OPC Server
 - Aromat Serial OPC Server
- AutomationDirect DirectNET
 - AutomationDirect EBC OPC Server
 - AutomationDirect ECOM OPC Server
 - AutomationDirect K Sequence
 - AutomationDirect Productivity 3000
- Beckhoff TwinCAT I/O
- BUSWARE Ethernet
- CODESYS Ethernet
- Contrex M-Series
 - Contrex Serial
- Custom Interface Driver - CID
- Cutler-Hammer D50/D300
 - Cutler-Hammer ELC Ethernet
 - Cutler-Hammer ELC Serial
- Dataforth isoLynx
- DDE Client Driver
- Fanuc Focas Ethernet
 - Fanuc Focas HSSB
- Fuji Flex
- GE CCM
 - GE Ethernet Global Data (EGD)
 - GE Ethernet OPC Server
 - GE SNP OPC Server
 - GE SNPX OPC Server
- Honeywell HC900 Ethernet
 - Honeywell UDC Ethernet
 - Honeywell UDC Serial
- Idec OPC Server
- Intelligent Actuator (IA) Super SEL
- InTouch Client
- IOtech PointScan 100
- Keyence KV Ethernet
- Krauss Maffei MC4 Ethernet
- Memory Based
- Mettler Toledo Continuous Mode Serial
- Micro-DCI
- Mitsubishi CNC Ethernet
 - Mitsubishi Ethernet
 - Mitsubishi FX
 - Mitsubishi FX Net
 - Mitsubishi Serial
- Modbus ASCII Serial
 - Modbus Ethernet
 - Modbus Plus
 - Modbus Serial
 - Modbus Unsolicited
- MTConnect
- ODBC Client Driver
- Omron FINS Ethernet
 - Omron FINS Serial
 - Omron Host Link
 - Omron NJ Ethernet
 - Omron Process Suite
 - Omron Toolbus
- OPC DA Client Driver
 - OPC UA Client Driver
 - OPC XML-DA Client Driver
- Optimization OptiLogic
- Opto 22 Ethernet
- Partlow ASCII
- Philips P8/PC20
- SattBus Ethernet
 - SattBus Serial
- Scanivalve Ethernet
- Siemens S5
 - Siemens S5 (3964R)
 - Siemens S7 MPI
 - Siemens S7-200
 - Siemens TCP/IP Ethernet
 - Siemens TCP/IP Unsolicited
- Simatic 505 Ethernet - CTI 2500 Series
 - Simatic 505 Serial - CTI 2500 Series
- SIXNET EtherTRAK
 - SIXNET UDR
- Square D
- System Monitor
- Telemecanique Uni-Telway
- Thermo Westronics Ethernet
 - Thermo Westronics Serial
- TIWAY Host Adapter
- Torque Tool Ethernet
- Toshiba Ethernet
 - Toshiba Serial
- Toyopuc Ethernet PC3/PC2
- Toyopuc Serial
- User Configurable Driver
- WAGO Ethernet
- Yaskawa Memobus Plus (SA85)
 - Yaskawa MP Series Ethernet
 - Yaskawa MP Series Serial
- Yokogawa Controller Serial
 - Yokogawa CX
 - Yokogawa Darwin Ethernet
 - Yokogawa Darwin Serial
 - Yokogawa DX Ethernet
 - Yokogawa DX Serial
 - Yokogawa DXP
 - Yokogawa HR
 - Yokogawa GX
 - Yokogawa MW
 - Yokogawa MX
 - Yokogawa YS100

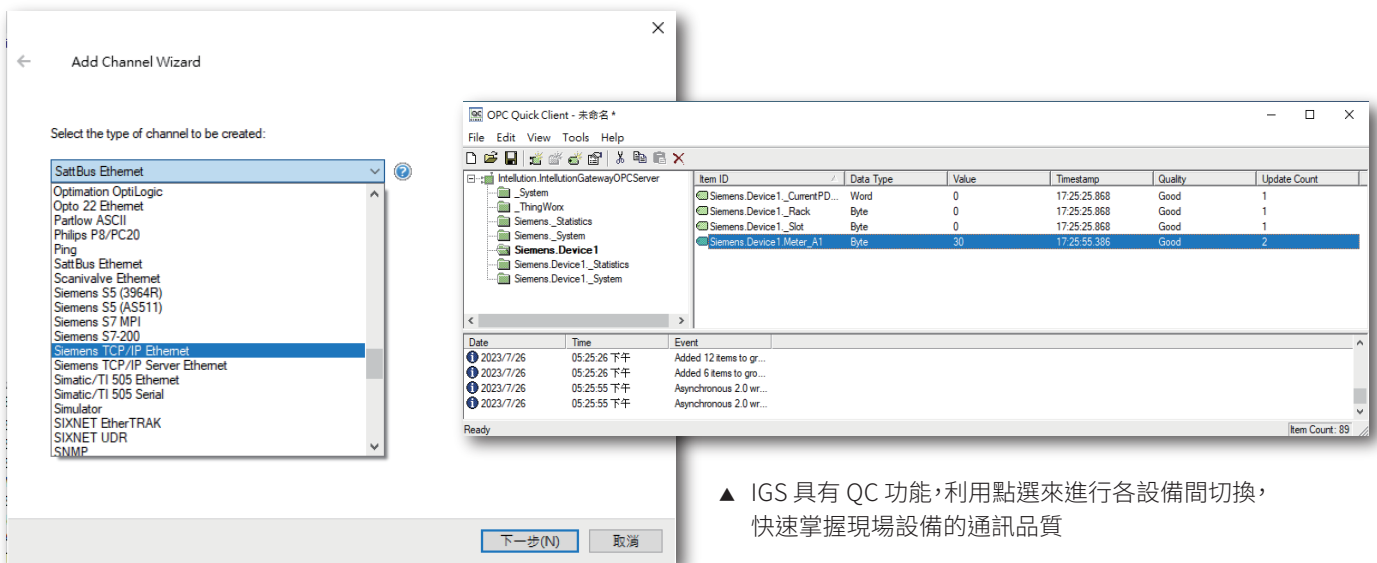
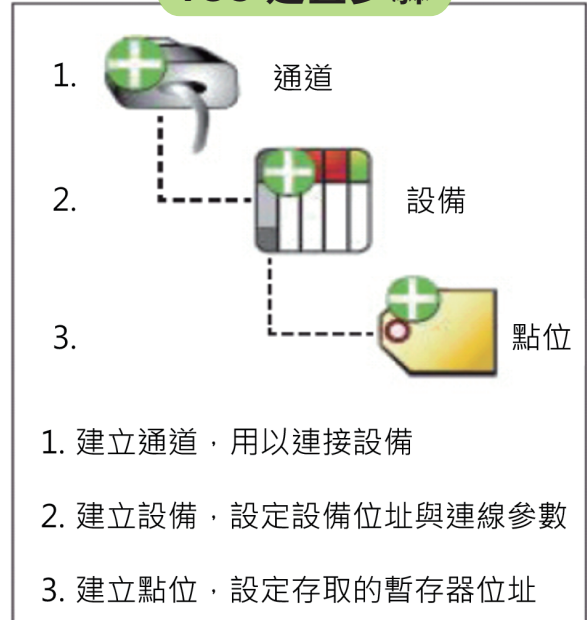
IGS Premium-Optional Drivers

- ABB Totalflow
- Alstom Redundant Ethernet
- BACnet/IP
- Bristol/IP
- DNP Client Ethernet
- DNP Client Serial
- Enron Modbus
- Fisher ROC Ethernet
- Fisher ROC Serial
- Fisher ROC Plus Ethernet
- Fisher ROC Plus Serial
- IEC 60870-5-101 Client
- IEC 60870-5-104 Client
- IEC 61850 MMS Client
- IoT Gateway
- Lufk in Modbus
- MQTT Client
- OMNI Flow Computer
- Ping
- SNMP
- Triconex Ethernet
- Weatherford 8500
- WITS Level 0 Active
- WITS Level 0 Passive

Option for Internet of Things (IoT) Gateway

- An optional plug-in that can be added to an IGS Server to connect Operations with IT to support IoT.
- Provides four agents to stream data over the MQTT, HTTP/REST, and the ThingWorx AlwaysOn protocols.
- Offers advanced message formatting for client agents to support multiple data modeling requirements, such as JSON, XML, CSV, and custom models.

IGS 建置步驟



▲ IGS 具有 QC 功能，利用點選來進行各設備間切換，快速掌握現場設備的通訊品質

MTConnect-OPC UA Driver

- Continuously collect real-time data from machine tool equipment for analysis and optimization

